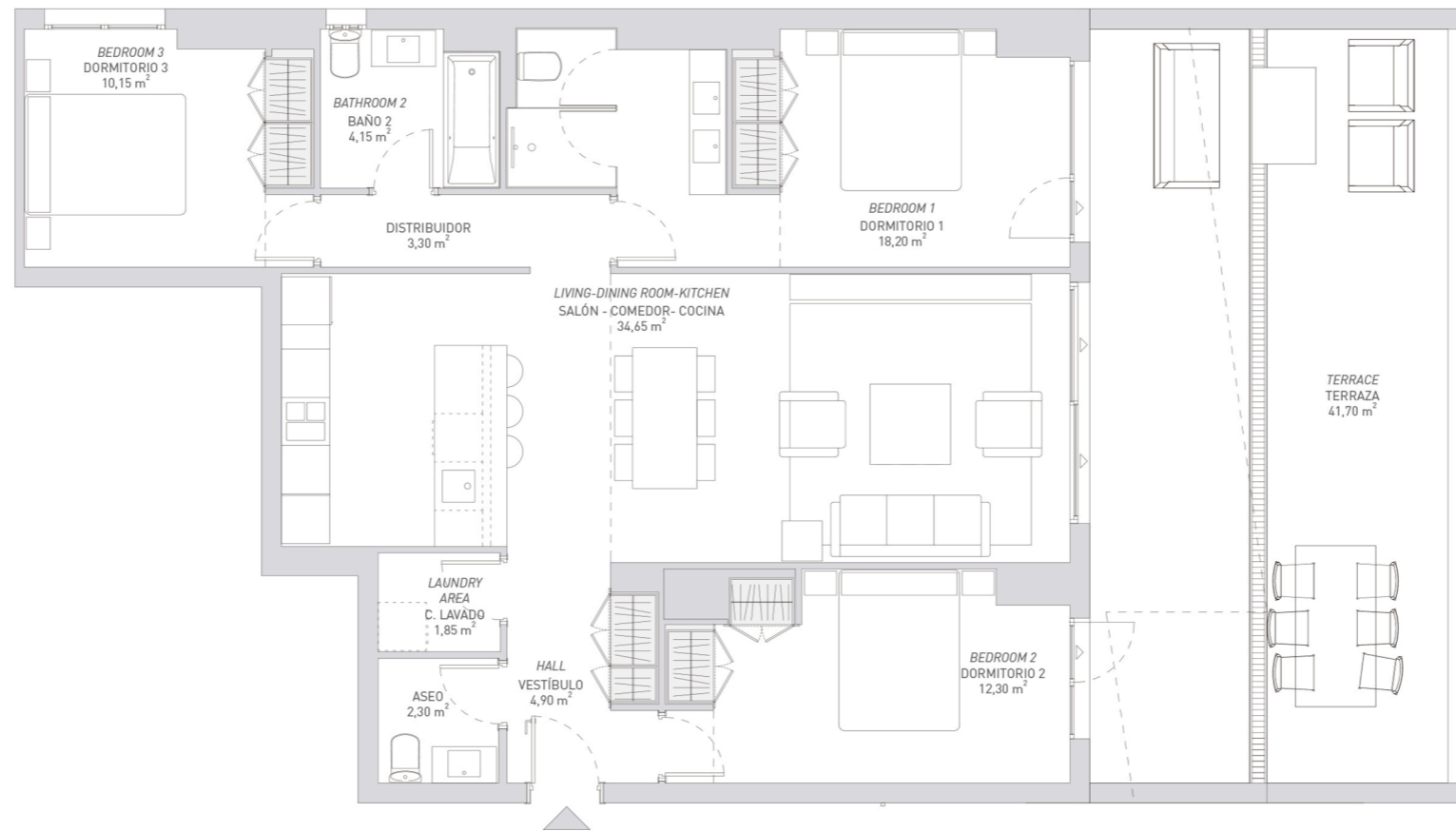


ACCESS FLOOR TYPE 2

PLANTA ACCESO TIPOLOGÍA 2



Bedrooms
Habitaciones
3

Built
Sup. Construidos
106,42 m²

Total Built*
Sup. cons. total*
124,20 m²

Terrace
Terrace
41,70 m²

Total built BOJA
Cons. total BOJA
134,84 m²

Covered
Cubierta
13,90 m²

Uncovered
Descubierta
27,80 m²

*with common areas / con zonas comunes